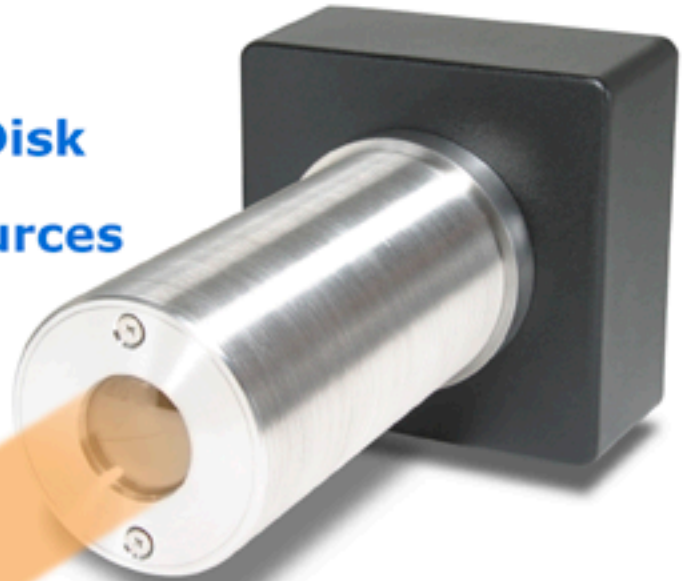


# Self-Referencing Probe

- ✓ Built-in Spectralon Disk
- ✓ Redundant Light Sources
- ✓ Rugged
- ✓ Fully Automatic



The Self-Referencing Probe can be connected to a CDI Spectrometer via a fiber optic cable and a power cord. The head produces a beam of light approximately 25mm in diameter, projected through a window which can be in contact with the materials being measured. Several fibers pick up the diffuse reflectance signal and transmit them to the spectrometer. The probe head has a built-in spectralon disk that is used as a 100% white reference. The spectralon disk is also used to conduct linearity tests and low/high flux noise measurements as per USP <1119>. Combined with our AutoCal feature, USP <1119> requirements are met by the system. Our AutoCal feature consists of an internal Hg/Ar lamp used to maintain a constant wavelength calibration.

All referencing can be done at anytime, without having to move the system after it is installed. The probe head has two light bulbs, one as a backup, providing redundancy. The probe head is made of 304 SS. Teflon or BUNA-N O-Ring seals are used to prevent dust and other contaminants from getting in.



2633 Foundation Drive, South Bend, IN 46628  
(574) 288-7338 - Fax (574) 288-7339  
Email: [Orders@controldevelopment.com](mailto:Orders@controldevelopment.com)  
[www.controldevelopment.com](http://www.controldevelopment.com)

Control Development, Inc. also manufactures integrated spectroscopy systems for: UV-VIS, NIR, RAMAN, and OEM customers.



NIR WITH USB



NIR



PORTABLE



RAMAN



MY INSTRUMENT



OEM