

Features

- ▶ Typical wavelength, 637nm
- ▶ Stabilized optical power 6mW
- ▶ Single supply voltage, 5V DC
- ▶ **Circular beam**
- ▶ **Precisely adjustable focus beam size**
- ▶ **3 elements optic structure**
(2 lens fixed, 1 lens mobile)
- ▶ Wire length : 30cm(standard) or custom
- ▶ Laser class : a
- ◆ **Option : Bracket & Power supply.**

Specification

Optical

Optical power(mW)	6 (Tc=25°C)
LD power(mW)	10(Max)
Wavelength(nm)	637 ±8
Focus Beam Dia(mm)	0.1(at 300mm)
Collimated Beam Dia(mm)	2.5(at 10m)
Collimated Beam Div(mrad)	<0.5
Beam Quality	TEM00, M ² <1.5
Beam intensity Pattern	Gaussian

Electrical

Operating voltage(DC V)	5 ± 5%
Operating current(mA)	65 (Max)
Drive circuit	APC
Operating Temp.(°C)	-10 ~ +50
Storage Temp.(°C)	-40 ~ +85

Mechanical

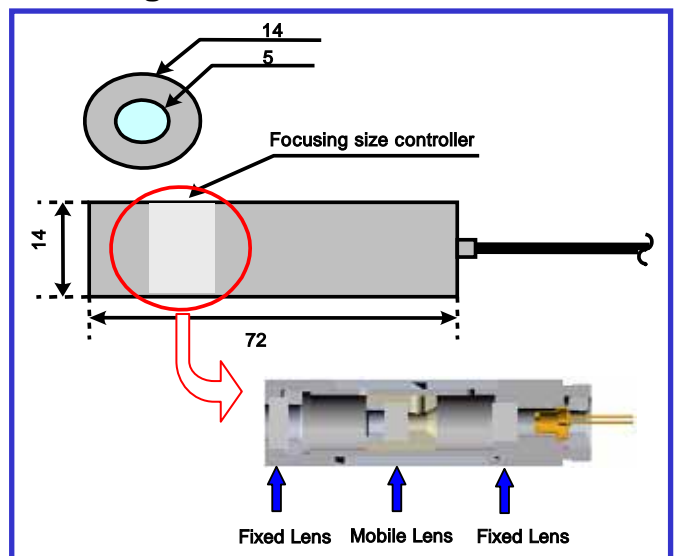
Weight(g)	22 ± 0.5
Dimensions(mm)	14 X 72
Operating lifetime(h)	30,000~50,000 (@RT)
Housing material	Aluminum

Description

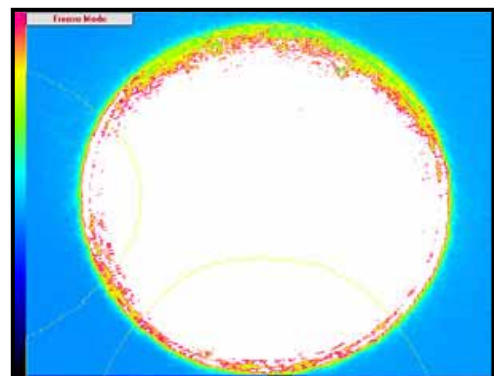
The MR series laser diode module combines laser diode technology, 3 elements lens optics, and sophisticated electronics within a slim and light aluminum anodized housing for variety of applications. Specially, This circular laser diode module emits circle laser ray from LD itself.

Applications include a measurement, positioning, lighting, alignment, guidelines, pointing, switching, leveling, and machine vision etc. Useful in a variety of medical, industrial, and scientific instrumentation, as well as general R&D work.

Drawings



* Beam Profile



Lanics Co., Ltd.
Room #703, 7F Woolim e-Biz Center
170-5, Guro-dong, Guro-gu, Seoul, 152-050, Korea
TEL : +82-2-2108-2255 FAX : +82-2-2108-2260
E-mail : support@lanics.com
http://www.lanics.com