

Features

- ▶ Typical wavelength, 658nm
- ▶ Stabilized optical power 20mW
- ▶ Single supply voltage, 5V DC
- ▶ **Circular beam**
- ▶ **Precisely adjustable focus beam size**
- ▶ **3 elements optic structure**
(2 lens fixed, 1 lens mobile)
- ▶ Wire length : 30cm(standard) or custom
- ▶ Laser class : III b
- ◆ **Option : Bracket & Power supply.**

Specification

● Optical

| | |
|---------------------------|----------------------------|
| Optical power(mW) | 20 (Tc=25°C) |
| LD power(mW) | 35 (Max) |
| Output Efficiency(%) | 57 |
| Wavelength(nm) | 658 ±7 |
| Focus Beam Dia(mm) | Φ0.1 (at 300mm) |
| Collimated Beam Dia(mm) | Φ2.5(at 10m) |
| Collimated Beam Div(mrad) | <0.5 |
| Beam Quality | TEM00, M ² <1.5 |
| Beam intensity Pattern | Gaussian |
| LD Pin Connection | Case Ground |

● Electrical

| | |
|-------------------------|-----------|
| Operating voltage(DC V) | 5 ± 5% |
| Operating current(mA) | 110 (Max) |
| Drive circuit | APC |
| Operating Temp.(°C) | -10 ~ +60 |
| Storage Temp.(°C) | -40 ~ +85 |

● Mechanical

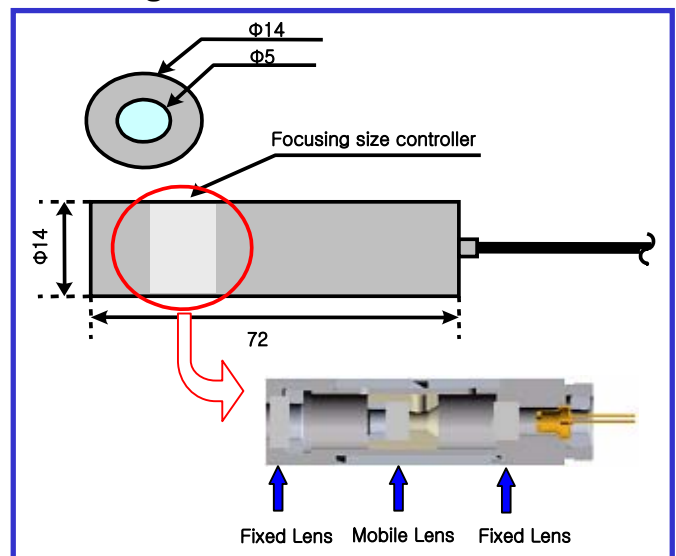
| | |
|-----------------------|---------------------|
| Weight(g) | 22 ± 0.5 |
| Dimensions(mm) | 14Φ X 72 |
| Operating lifetime(h) | 30,000~50,000 (@RT) |
| Housing material | Aluminum |

Description

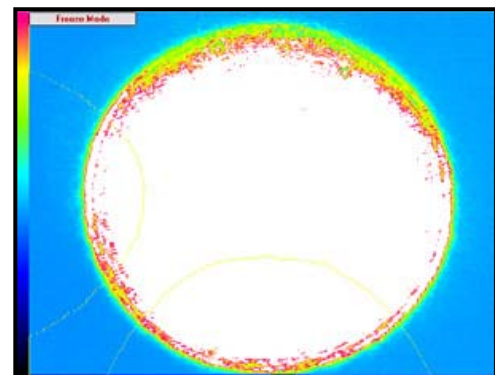
The MR series laser diode module combines laser diode technology, 3 elements lens optics, and sophisticated electronics within a slim and light aluminum anodized housing for variety of applications. Specially, This circular laser diode module emits circle laser ray from LD itself.

Applications include a measurement, positioning, lighting, alignment, guidelines, pointing, switching, leveling, and machine vision etc. Useful in a variety of medical, industrial, and scientific instrumentation, as well as general R&D work.

Drawings



* Beam Profile



Lanics Co., Ltd.

Room #703, 7F Woolim e-Biz Center
170-5, Guro-dong, Guro-gu, Seoul, 152-050, Korea
TEL : +82-2-2108-2255 FAX : +82-2-2108-2260
E-mail : support@lanics.com
http:// www.lanics.com